

Service Document **Exchange Set**

Beezz RCD 6800 DEC

Service Manual

Sicherheit
Safety

Materialnr./Part No.
720108000001



Es gelten die Vorschriften und Sicherheitshinweise gemäß dem Service Manual „Sicherheit“, Materialnummer 720108000001, sowie zusätzlich die eventuell abweichenden, landesspezifischen Vorschriften!



The regulations and safety instructions shall be valid as provided by the „Safety“ Service Manual, part number 720108000001, as well as the respective national deviations.

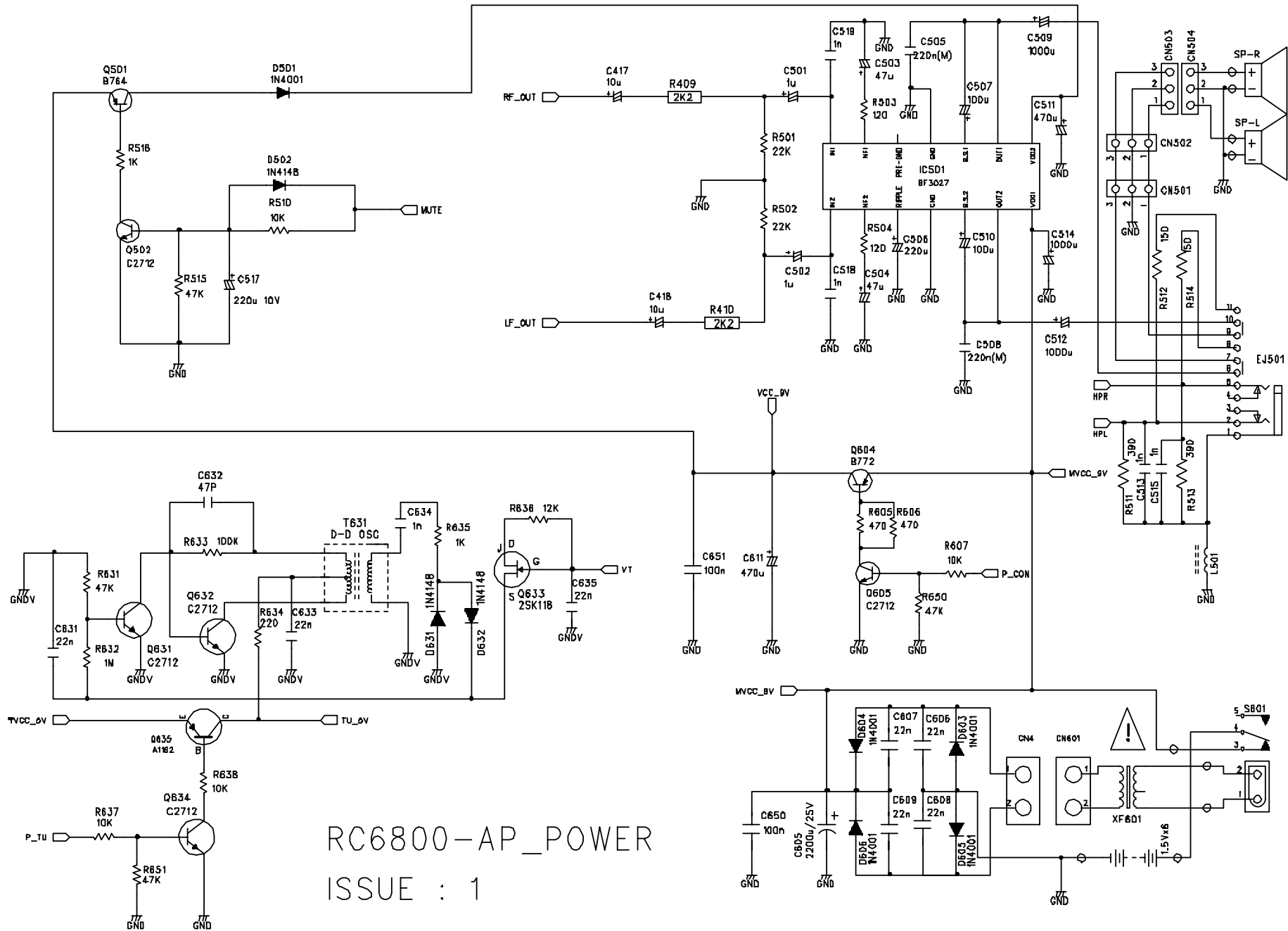
Dieses Service Dokument ist nur in Datenform verfügbar

This Service Document is only available as data

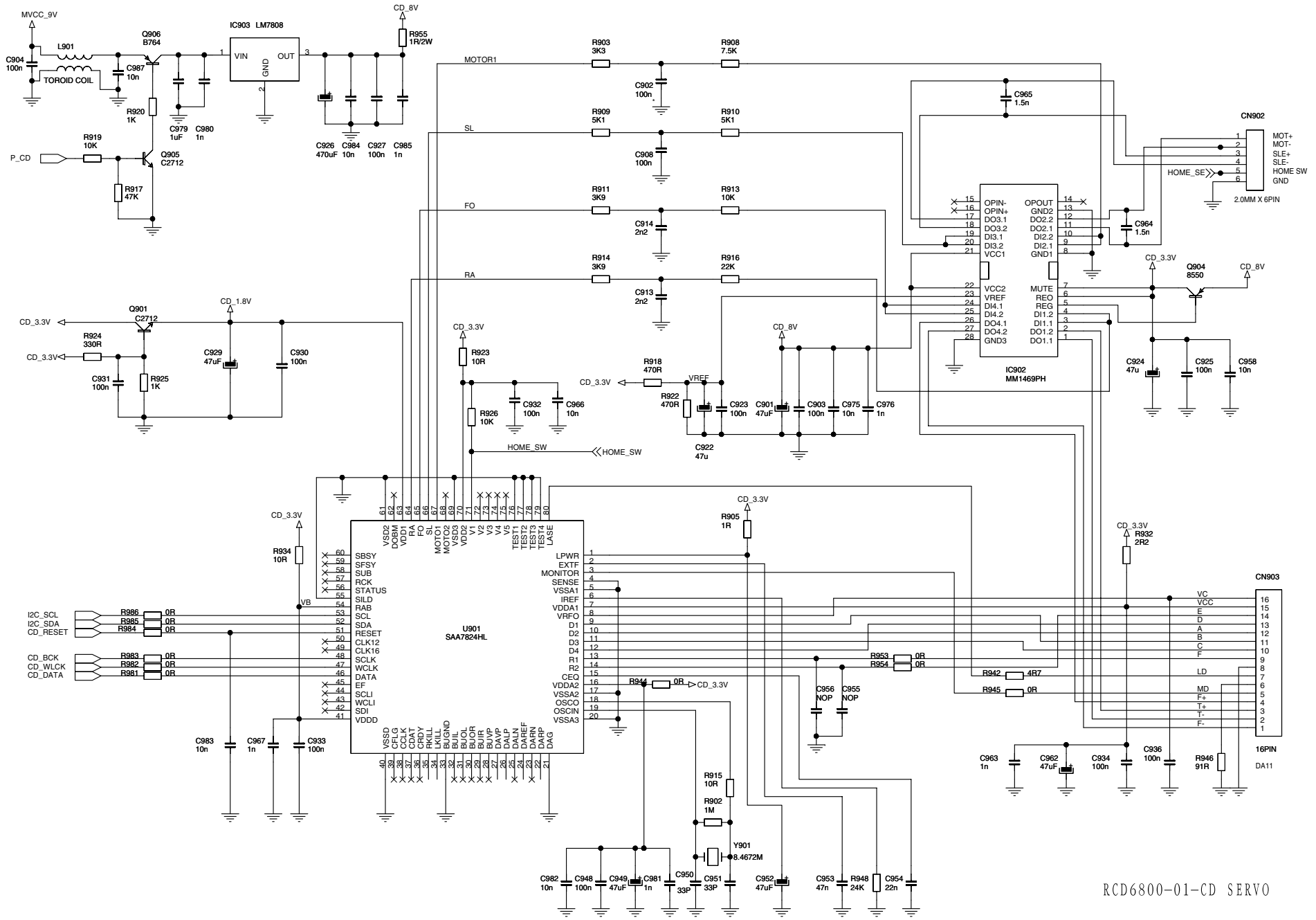
Änderungen vorbehalten/Subject to alteration

Made by GRUNDIG in Germany • TCC 0506 HH

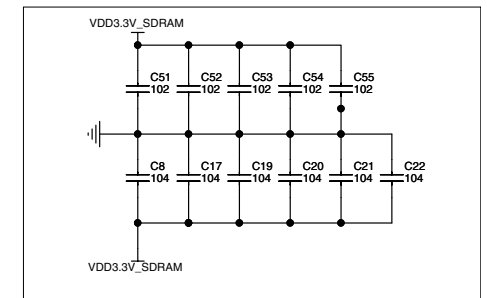
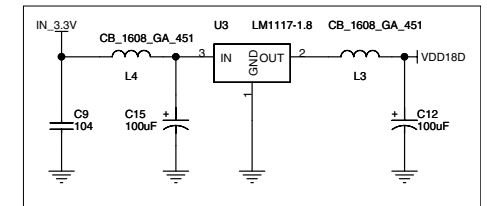
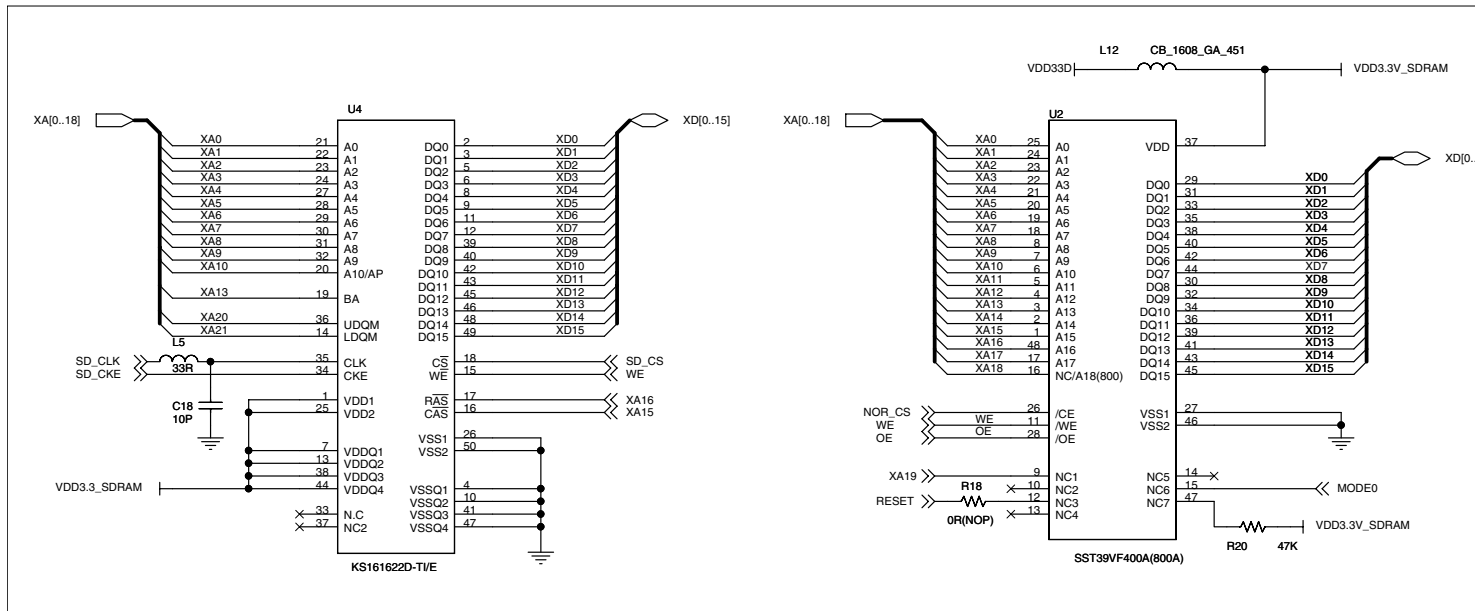
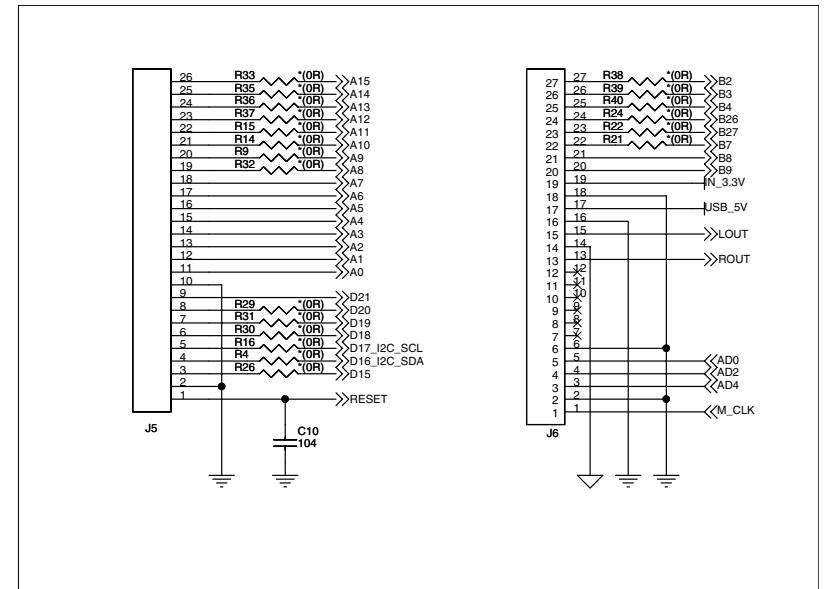
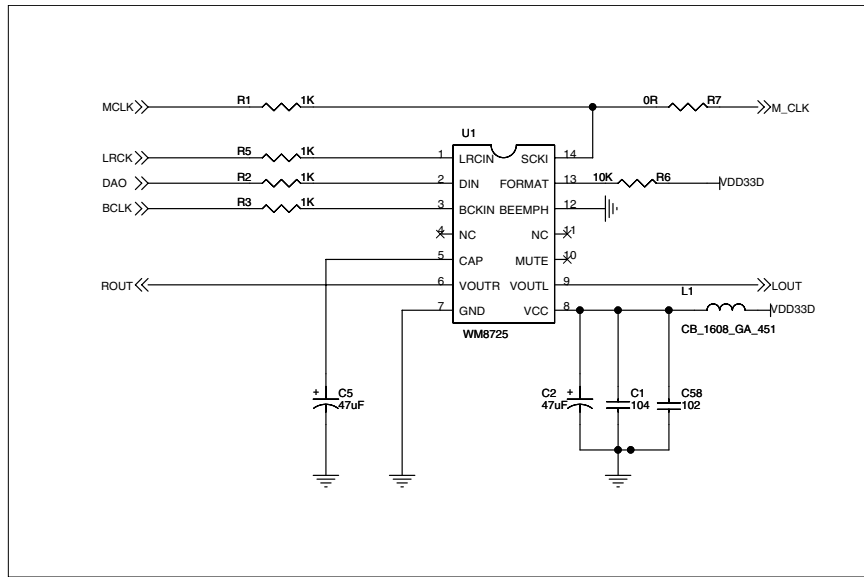
<http://www.grundig.com>



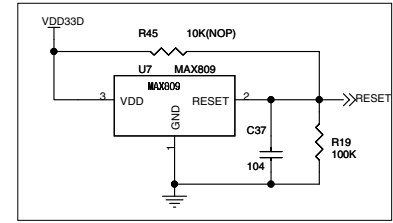
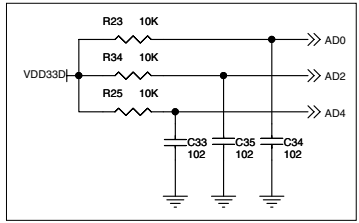
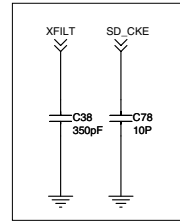
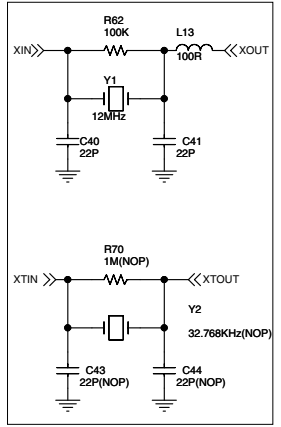
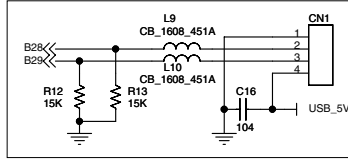
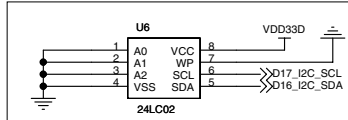
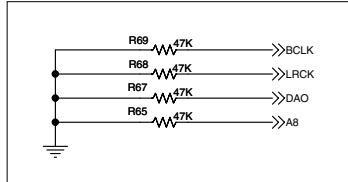
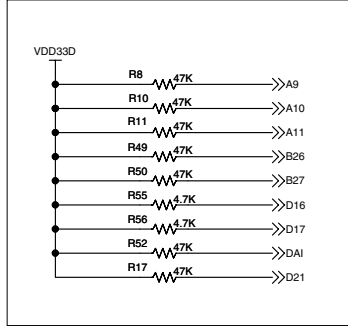
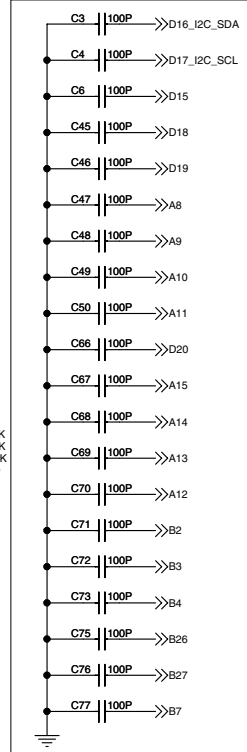
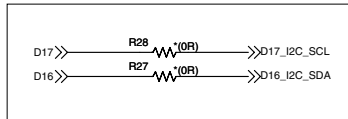
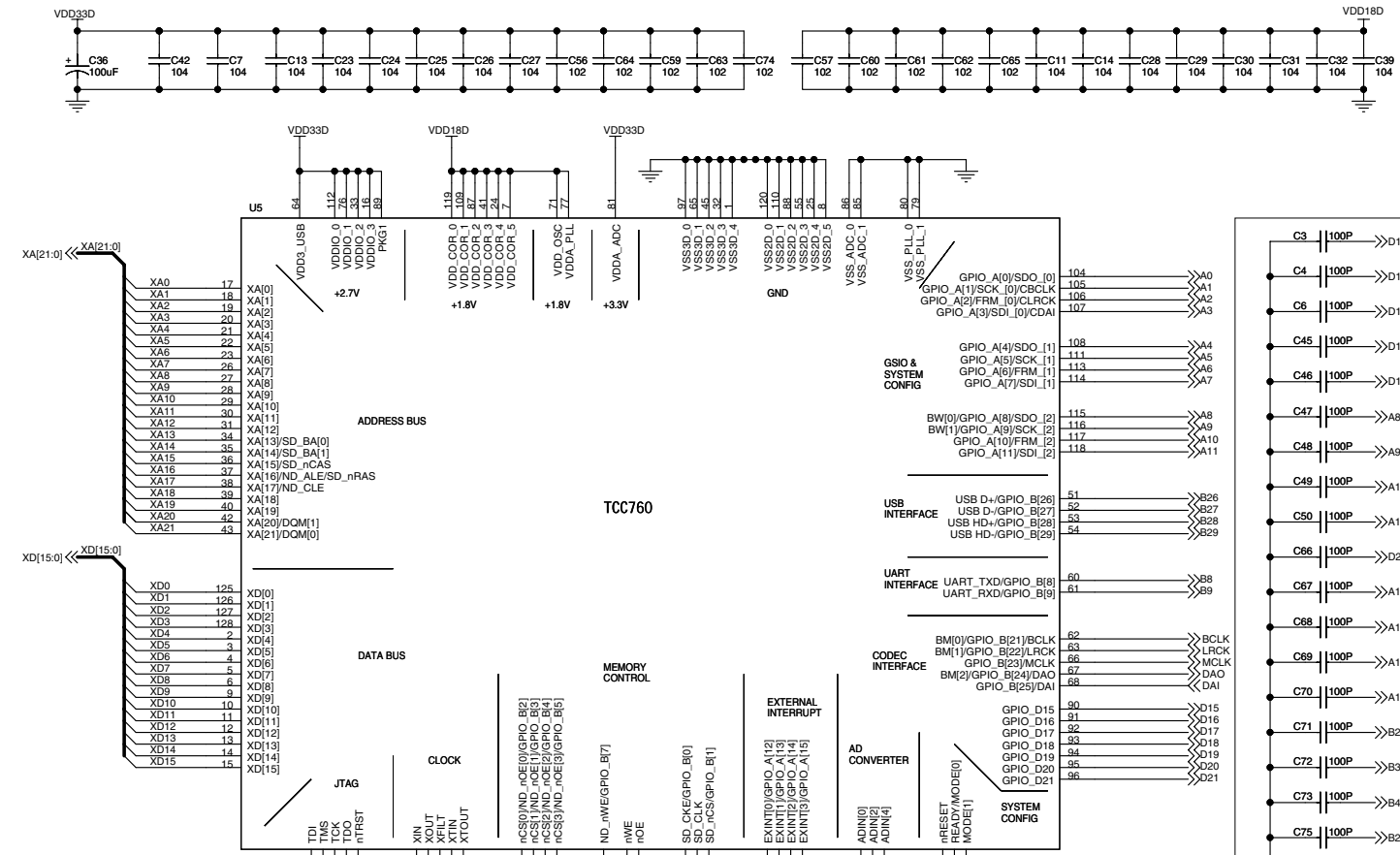
RC6800-AP_POWER
ISSUE : 1



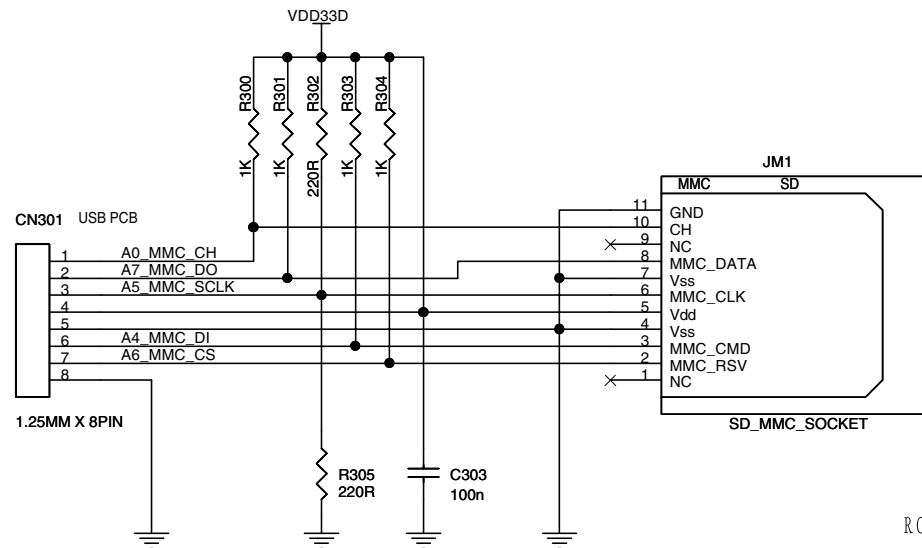
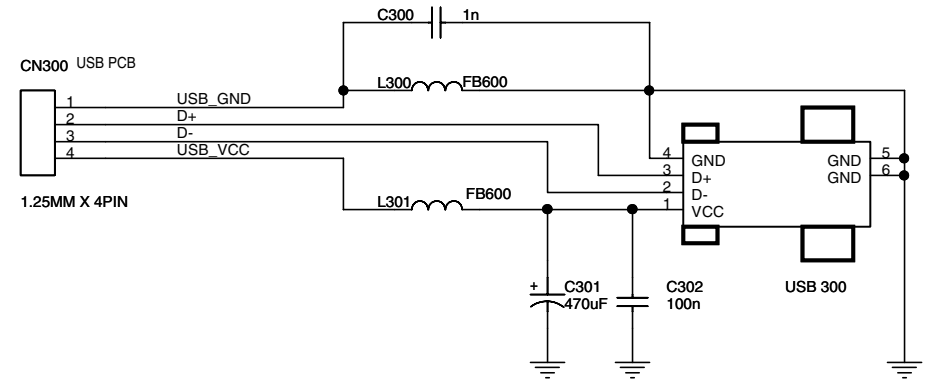
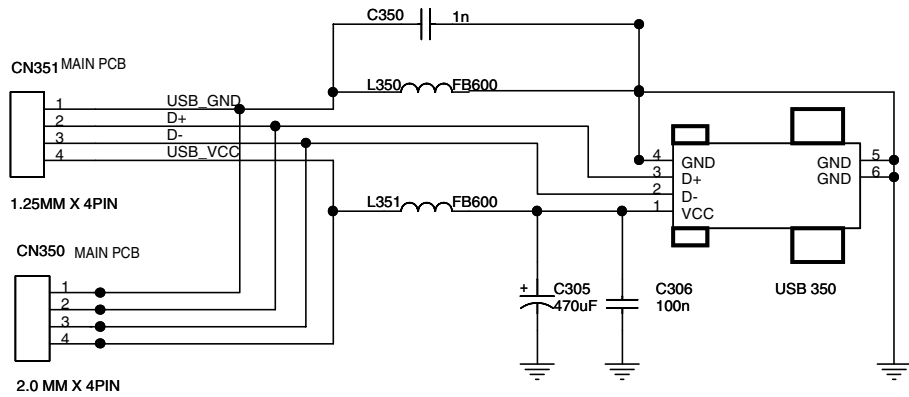
RCD6800-01-CD SERVO



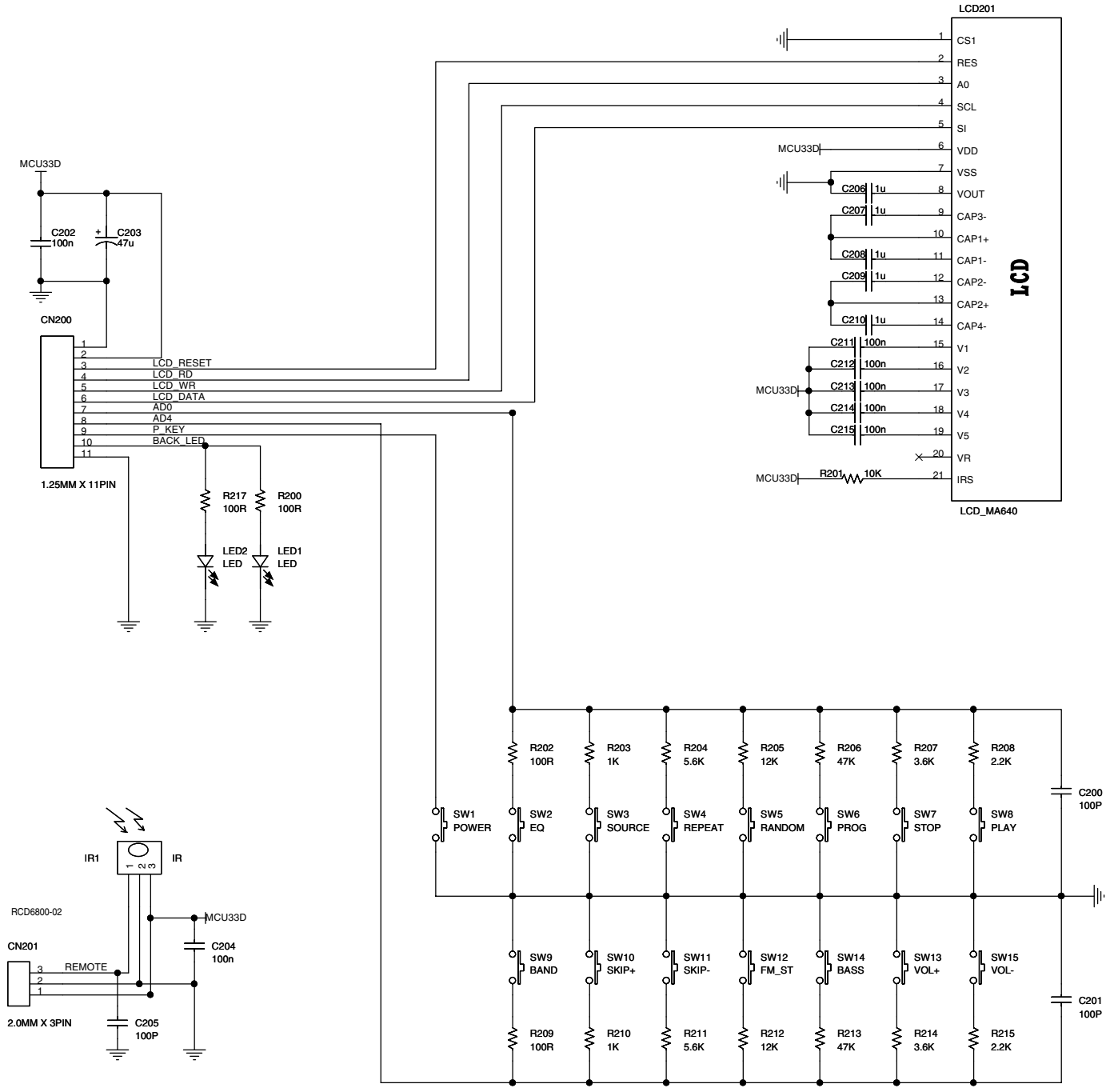
NOR_FLASH_SDRAM_COECD



TCC760

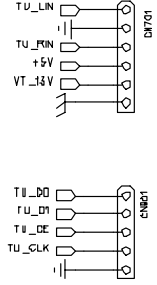
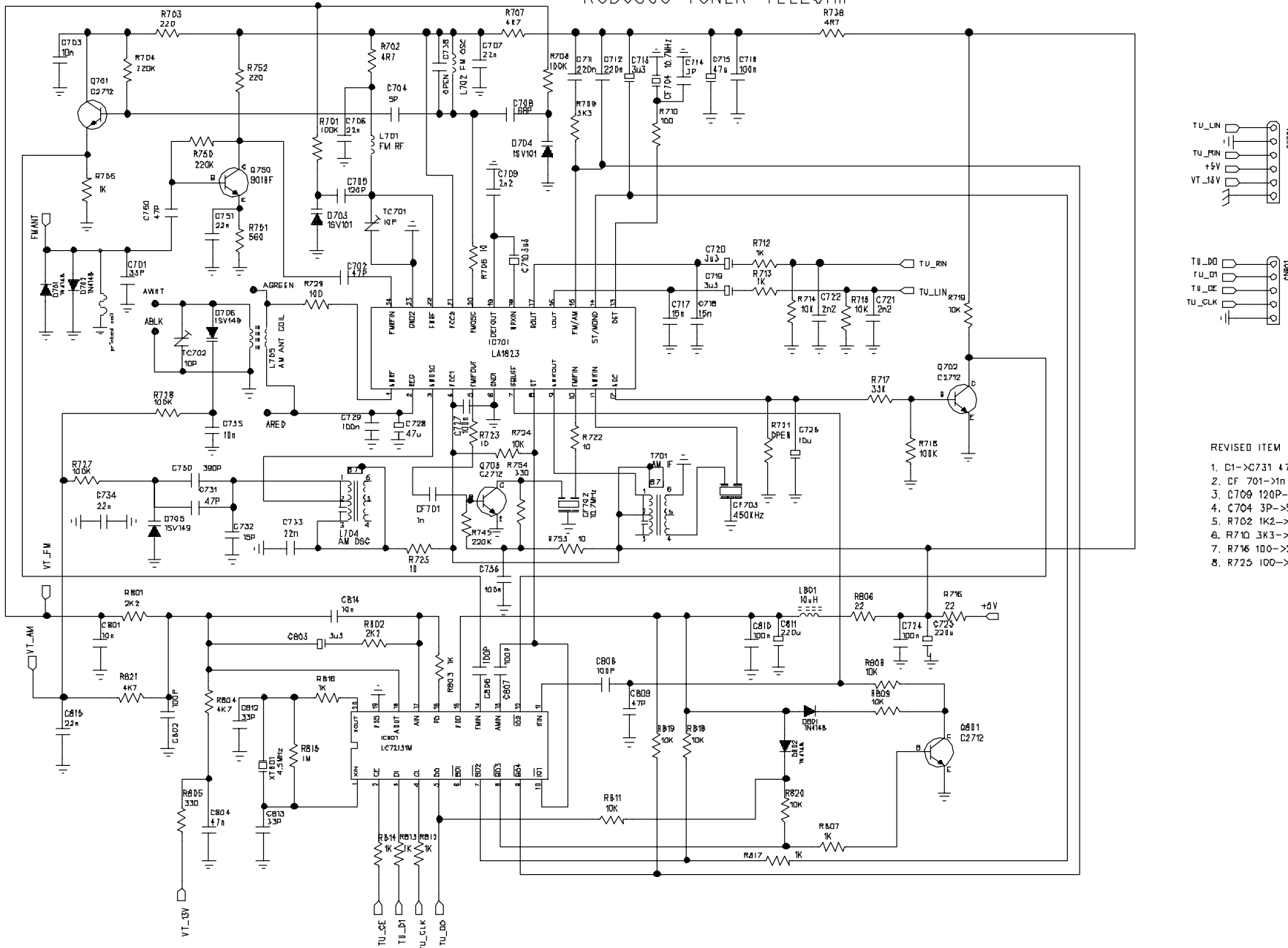


RCD6800-04-USB-SD/MMC

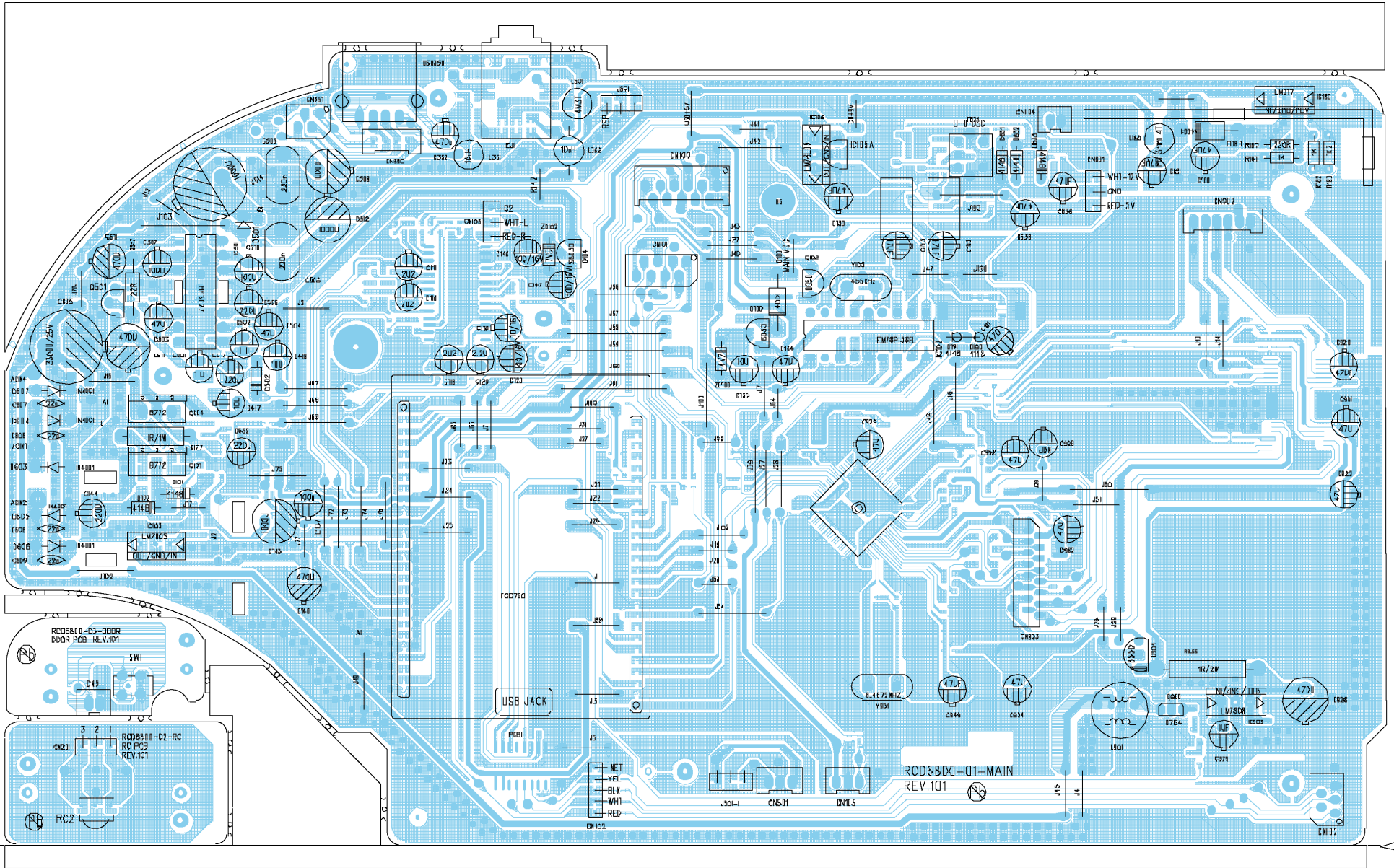


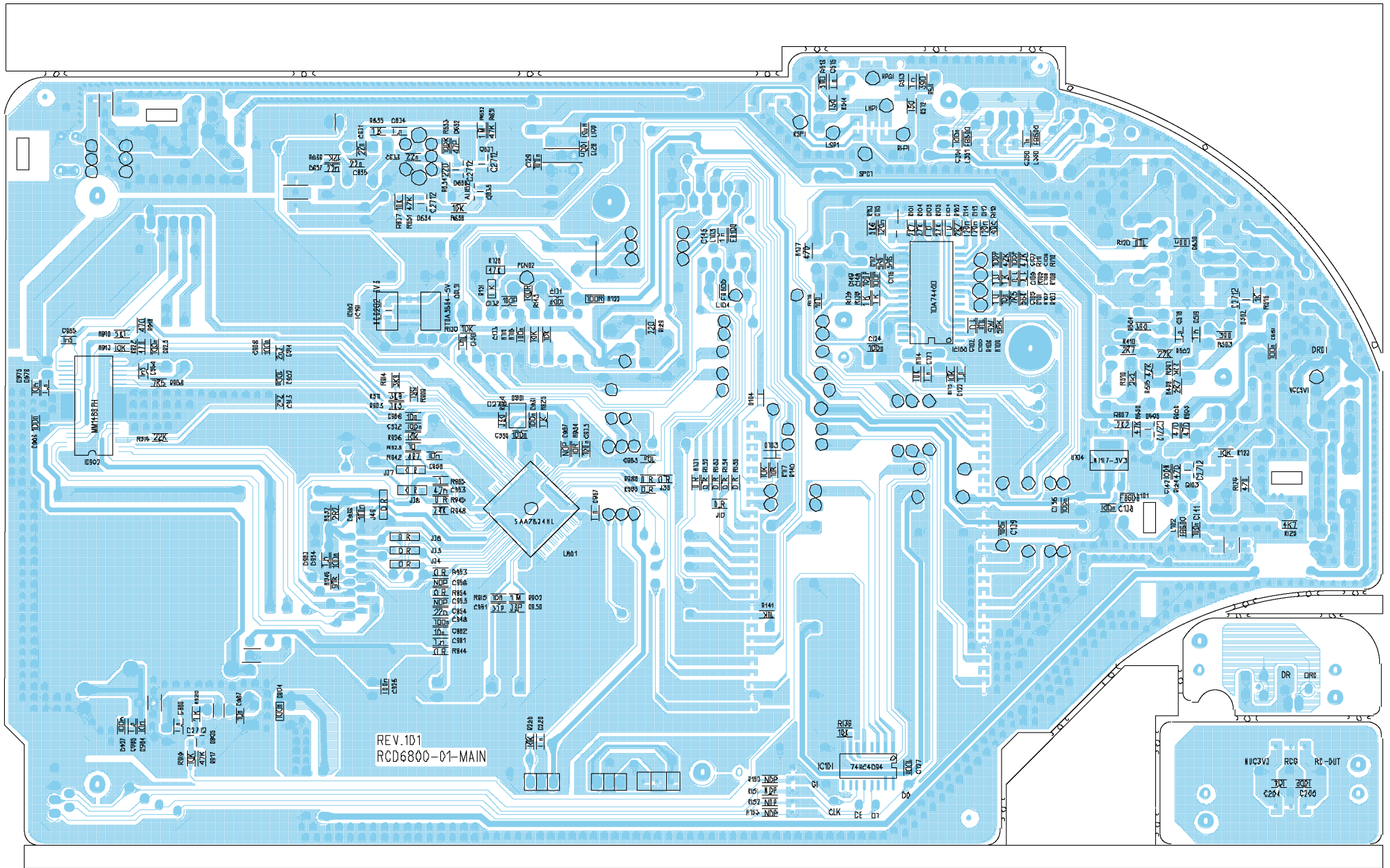
RCD6800-05-LCD_KEY

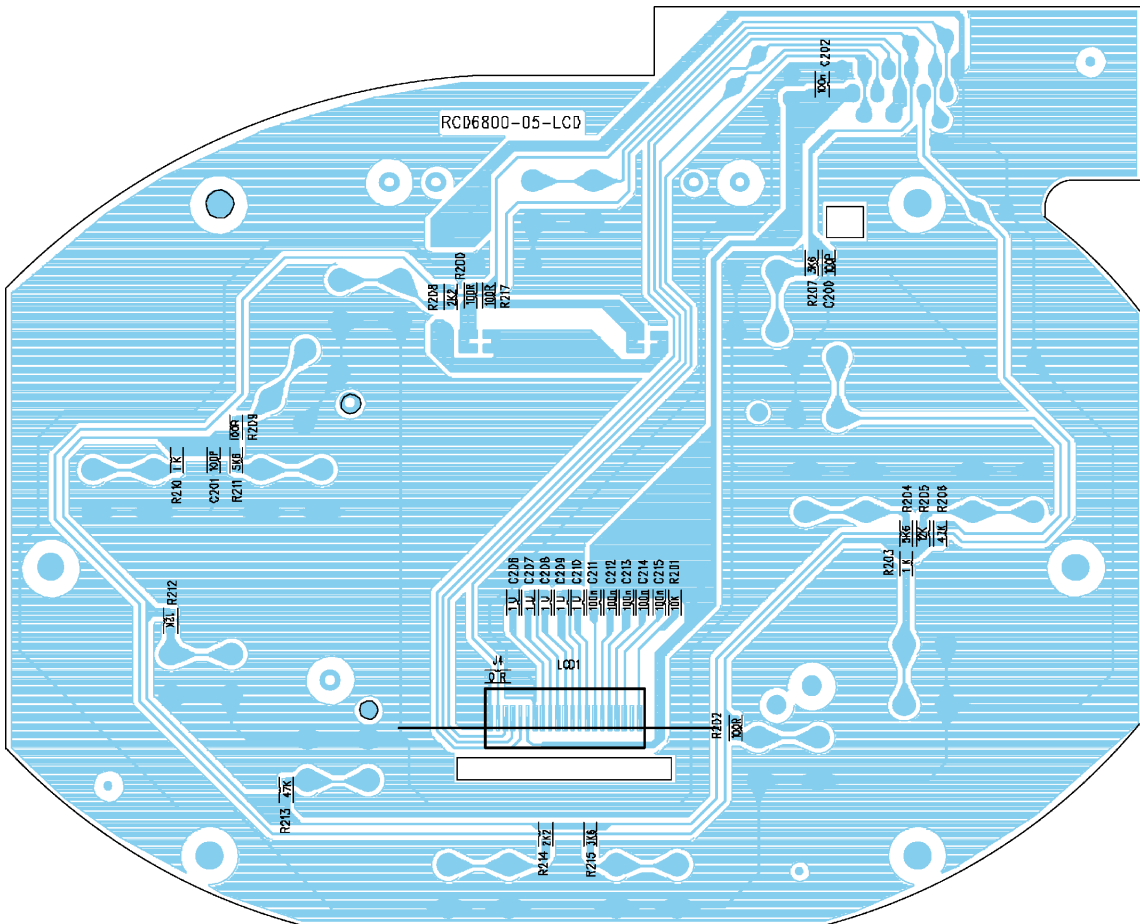
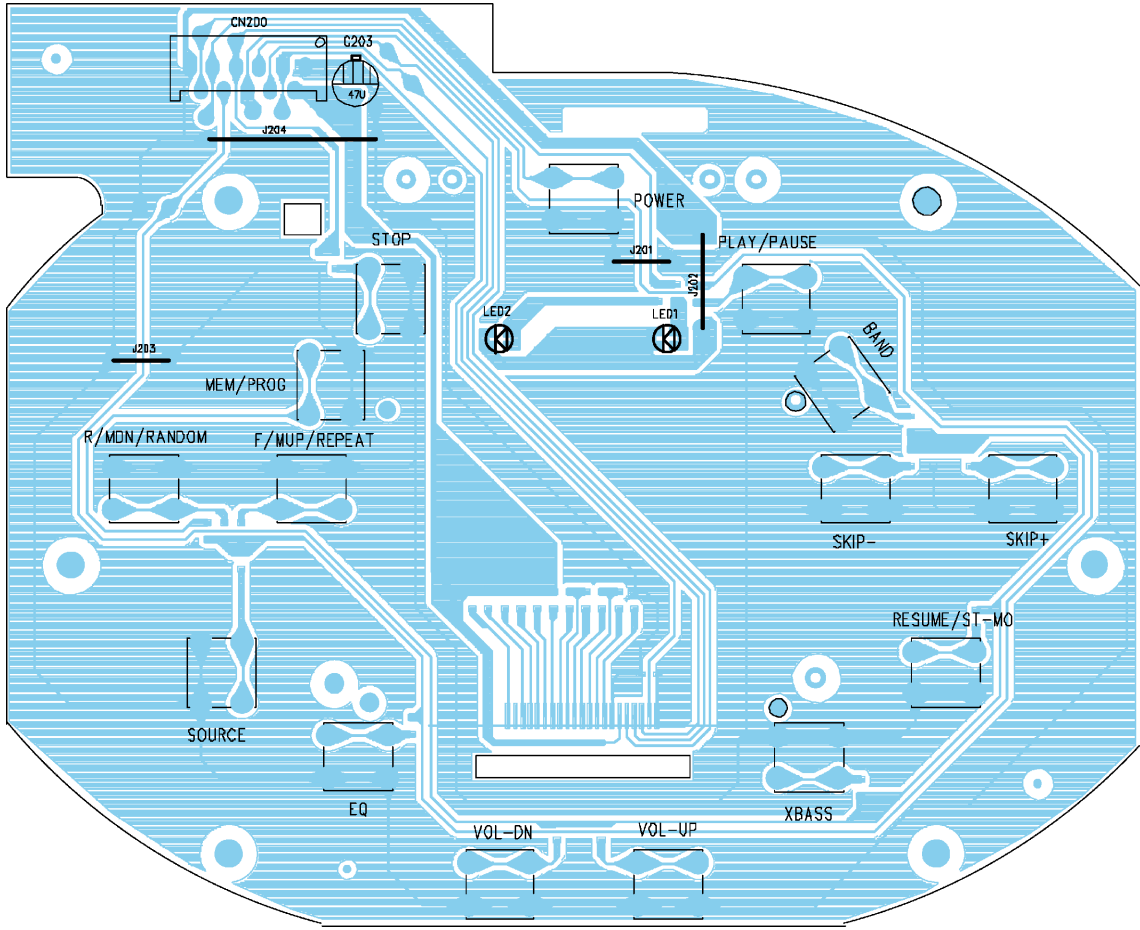
RCD6800 TUNER-TELECHIP

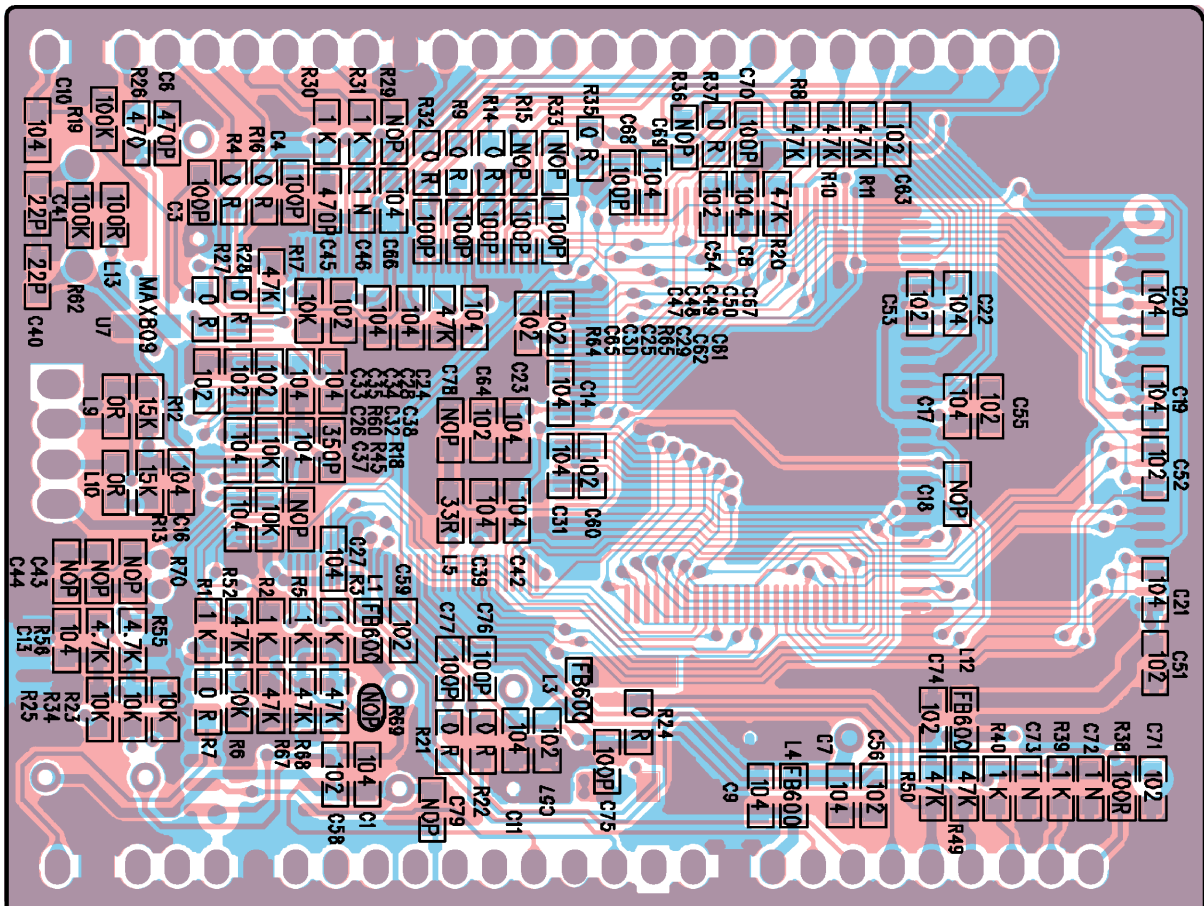
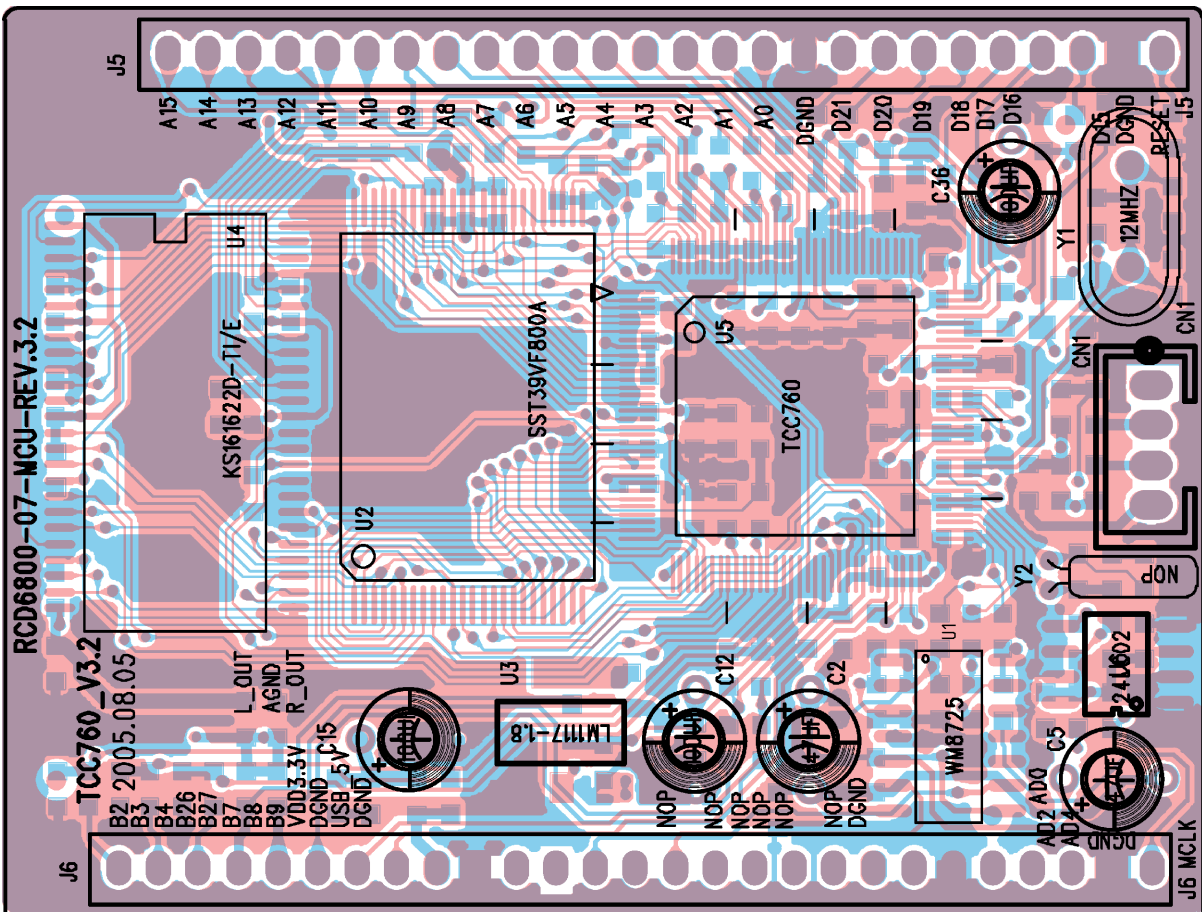


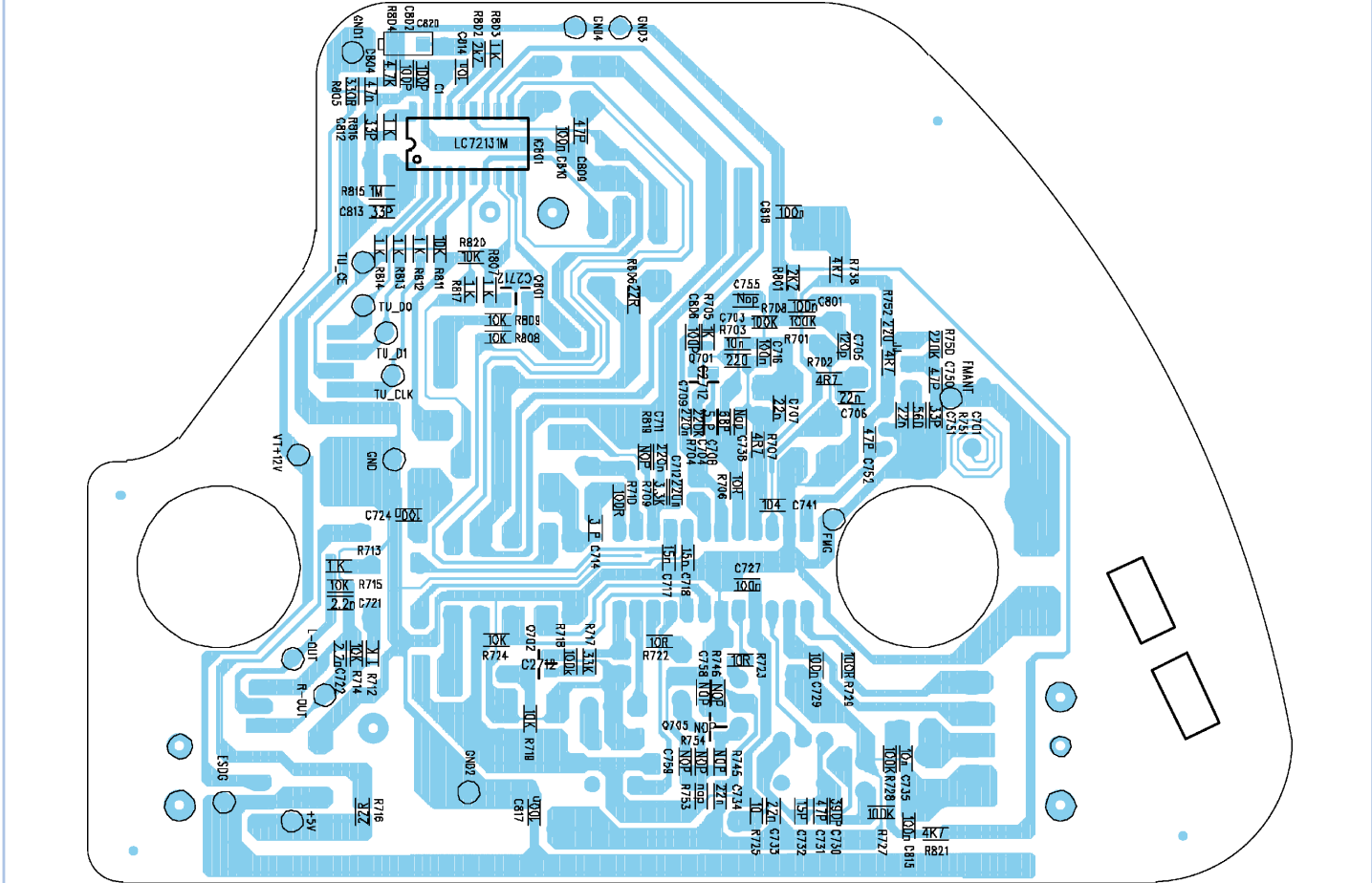
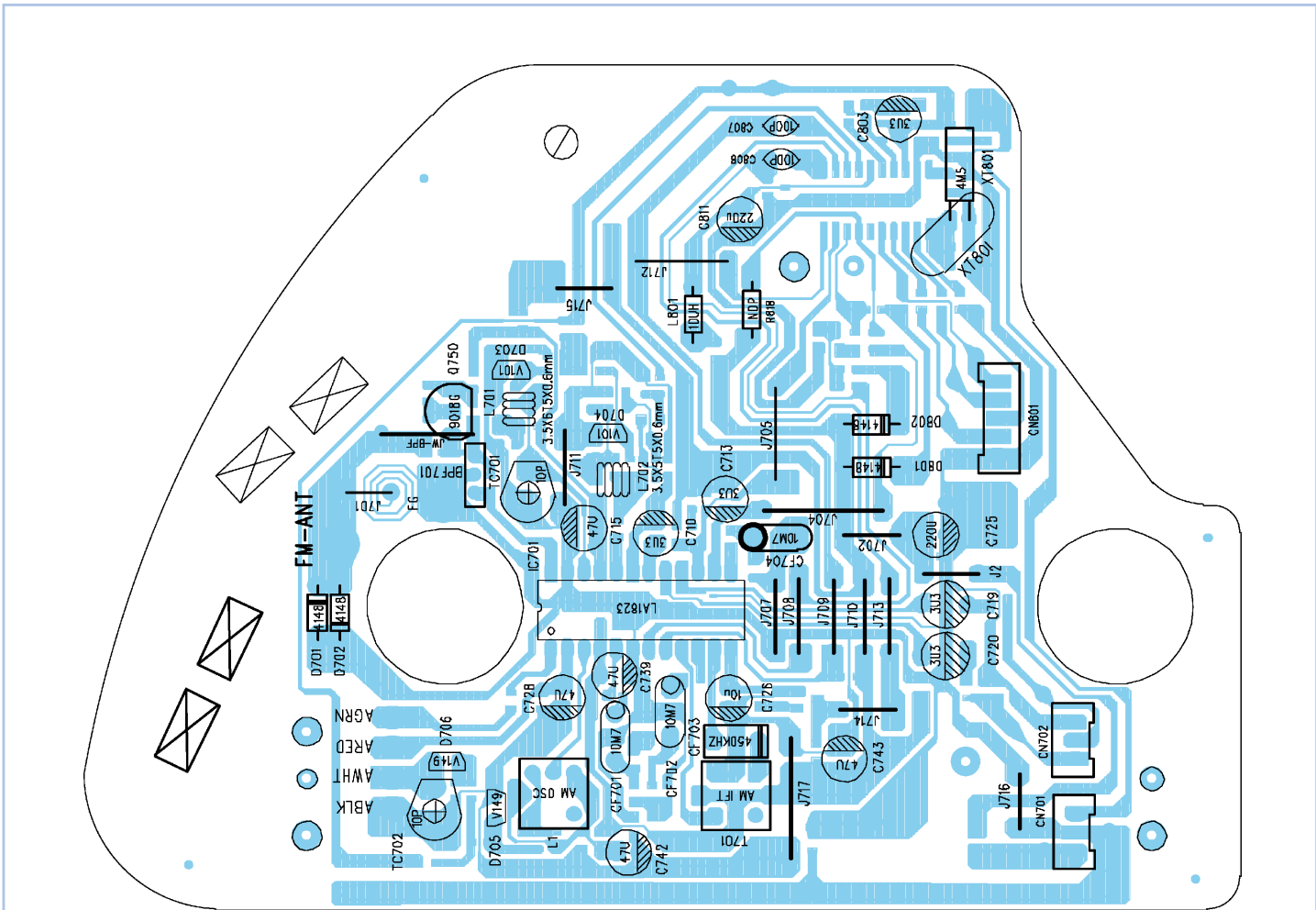
- REVISED ITEM
1. C1->C731 47P
 2. CF 701->1n
 3. C709 120P->2n2
 4. C704 3P->5P
 5. R702 1K2->1K
 6. R710 3K3->100
 7. R716 100->22
 8. R725 100->10

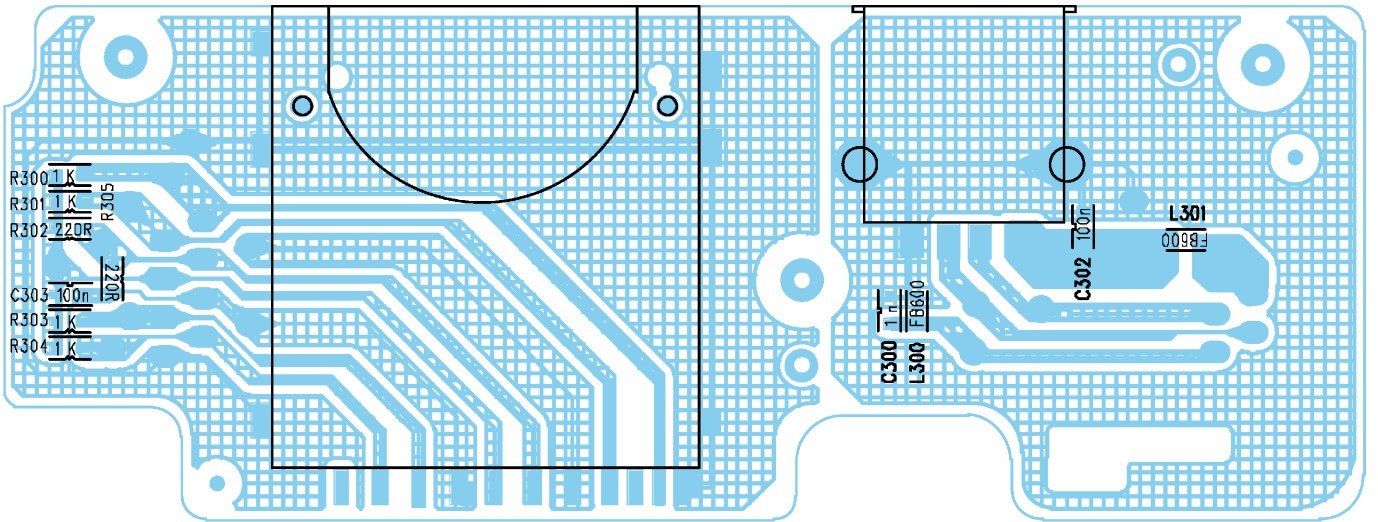
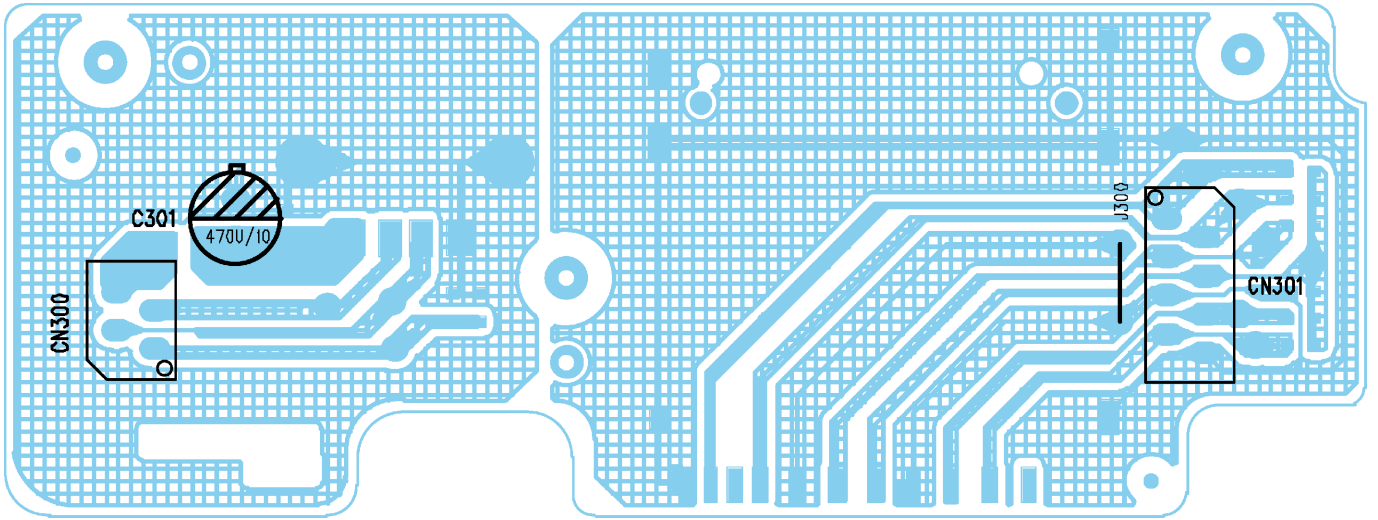


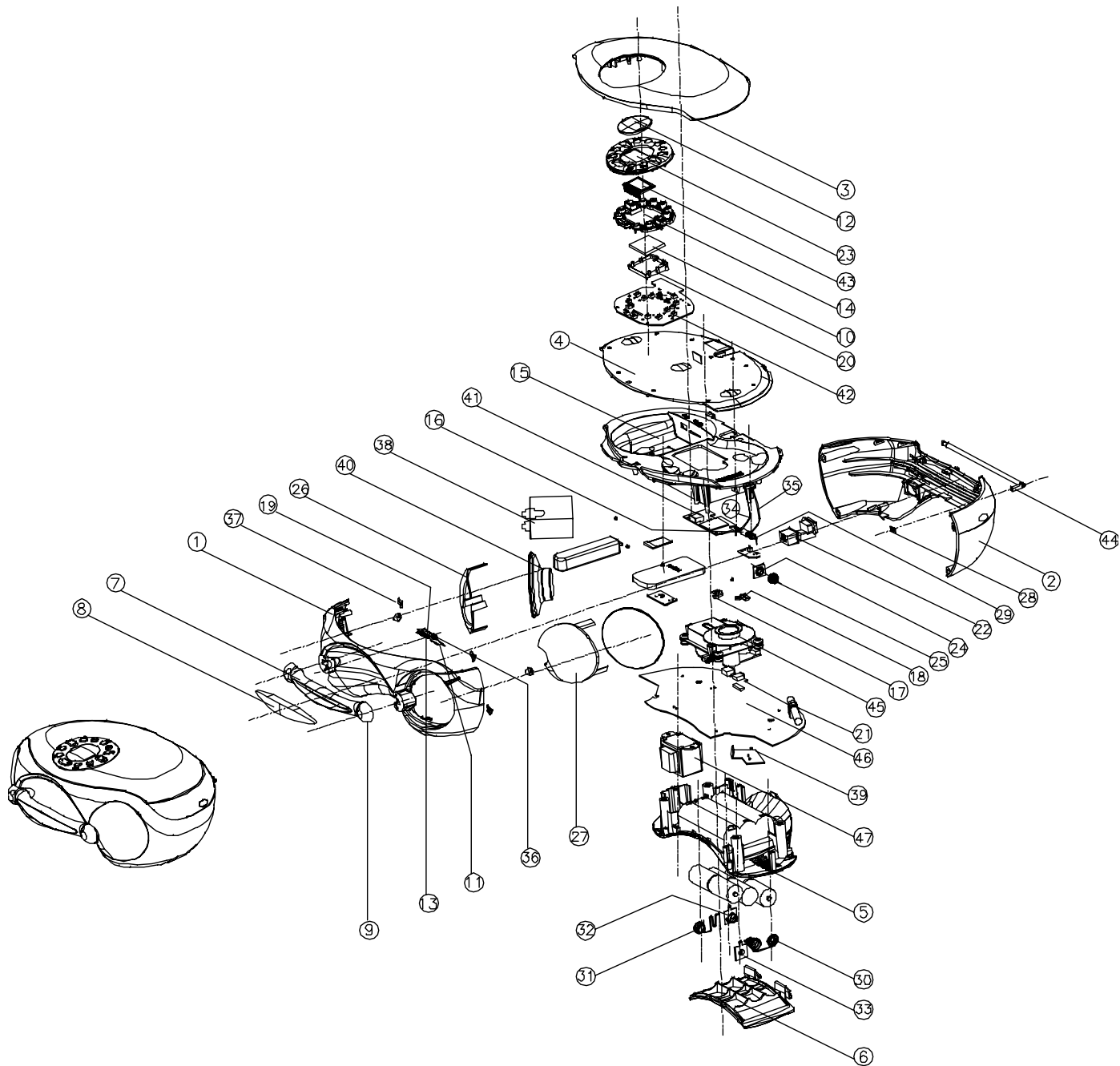












Ersatzteilliste Spare Parts List

AUDIO

11 / 2005

BEEZZ RCD 6800 DEC

BESTELL-NR. / ORDER NO.: GDR5000

POS. NR. POS. NO.	ABB. FIG.	MATERIAL-NR. PART NUMBER	ANZ. QTY.	BEZEICHNUNG ①	DESCRIPTION ②
		GDR5000		BEEZZ RCD 6800 DEC SCHWARZ TAUSCHGERAET	BEEZZ RCD 6800 DEC BLACK EXCHANGE SET
0001.000		759540541100		STABANTENNE	ROD ANTENNA
0002.000		759540541200		BATTERIEFACHDECKEL	BATTERY DOOR
0010.000		720117138300		FERNBEDIENUNG	REMOTE CONTROL
0015.000!		829099100300		NETZKABEL M.FLACHSTECKER GWN9.	MAINS LEAD W.FLAT PLUG GWN9.0
		720114063000		BEDIENUNGSANLEITUNG D,GB,F,I,PE,NL,PL,DK,S,FIN,TR	INSTURCTION MANUALP D,GB,F,I,PE,NL,PL,DK,S,FIN,TR

Es gelten die Vorschriften und Sicherheitshinweise gemäß dem Service Manual "Sicherheit", Mat.-Nummer 720108000001, sowie zusätzlich die eventuell abweichenden, landesspezifischen Vorschriften!



The regulations and safety instructions shall be valid as provided by the "Safety" Service Manual, part number 720108000001, as well as the respective national deviations.

ÄNDERUNGEN VORBEHALTEN / SUBJECT TO ALTERATION



Ersatzteilliste Spare Parts List

AUDIO

11 / 2005

BEEZZ RCD 6800 DEC

BESTELL-NR. / ORDER NO.: GDR5099

POS. NR. POS. NO.	ABB. FIG.	MATERIAL-NR. PART NUMBER	ANZ. QTY.	BEZEICHNUNG 	DESCRIPTION 
		GDR5099		BEEZZ RCD 6800 DEC SCHWARZ KEIN E-TEIL	BEEZZ RCD 6800 DEC BLACK NO SPARE PART
		GDR5000		BEEZZ RCD 6800 DEC SCHWARZ TAUSCHGERAET	BEEZZ RCD 6800 DEC BLACK EXCHANGE SET
0001.000		759540541100		STABANTENNE	ROD ANTENNA
0002.000		759540541200		BATTERIEFACHDECKEL	BATTERY DOOR
0010.000		720117138300		FERNBEDIENUNG	REMOTE CONTROL
0015.000!		829099100300		NETZKABEL M.FLACHSTECKER GWN9.	MAINS LEAD W.FLAT PLUG GWN9.0
		720114063000		BEDIENUNGSANLEITUNG D,GB,F,I,PE,NL,PL,DK,S,FIN,TR	INSTURCTION MANUALP D,GB,F,I,PE,NL,PL,DK,S,FIN,TR

Es gelten die Vorschriften und Sicherheitshinweise gemäß dem Service Manual "Sicherheit", Mat.-Nummer 720108000001, sowie zusätzlich die eventuell abweichenden, landesspezifischen Vorschriften!



The regulations and safety instructions shall be valid as provided by the "Safety" Service Manual, part number 720108000001, as well as the respective national deviations.

ÄNDERUNGEN VORBEHALTEN / SUBJECT TO ALTERATION